

SHELLEY ROAD, WELLINGBOROUGH, NN8

£249,500

3 Bedroom Semi Detached
House



Chelton Brown are pleased to present this immaculate 3 bedroom semi-detached chalet-style house. The property benefits from modern decor throughout, uPVC double glazing, refitted kitchen, 2 double bedrooms and 1 single bedroom, modern bathroom, driveway and single garage.

- Semi Detached House
- Kitchen / Diner
- Three Bedrooms
- Garden
- Garage
- Off Road Parking
- EPC Rating B
- Council Tax Band B

SHELLEY ROAD, WELLINGBOROUGH, NN8

Hall



uPVC door leading into hallway

Kitchen/Diner 16'8" x 6'7"



Kitchen/diner with double oven and hob. uPVC windows to the front and side. Door leading to porch

Lounge 9'9" x 20'8"



Lovely living area with uPVC french doors to garden

Bedroom 1 12'5" x 10'7"



Double bedroom with fitted units and uPVC window to front aspect

Bedroom 2 7'8" x 10'7"



Double bedroom with access to eaves storage and uPVC window to rear aspect of property

Bathroom



Family bathroom with shower over bath

Bedroom 3 10'11" x 6'0"



Single bedroom with uPVC window to side of property

Eaves Storage

Garage


Integral garage

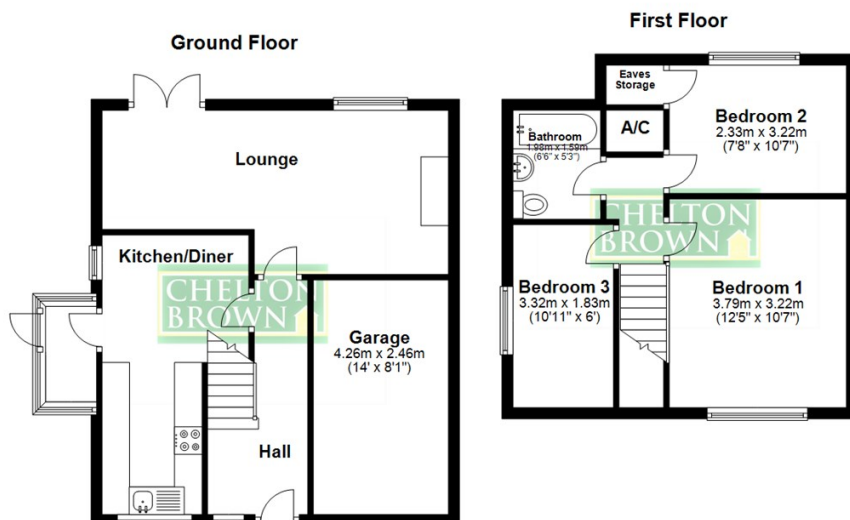
Window to rear, window to side, window to front, door.

A/C

SHELLEY ROAD, WELLINGBOROUGH, NN8

Price £249,500

Energy Efficiency Rating		
	Current	Potential
Very energy efficient - lower running costs		
(92 plus) A	84	63
(81-91) B		
(69-80) C		
(55-68) D		
(39-54) E		
(21-38) F		
(1-20) G		
Not energy efficient - higher running costs		
England & Wales		
EU Directive 2002/91/EC		
		



Floor Plan measurements are approximate and are for illustrative purposes only. While we do not doubt the floor plans accuracy, we make no guarantee, warranty or representation as to the accuracy and completeness of the floor plan. You or your advisors should conduct a careful, independent investigation of the property to determine to your satisfaction as to the suitability of the property for your space requirements.
Plan produced using PlanUp.

